

# CERTIFICATE OF LOCATION OF GOVERNMENT CORNER

EAST QUARTER Corner of Section 10, Township 107, Range 42, 5TH P.M.

STATE OF MINNESOTA, County of MURRAY

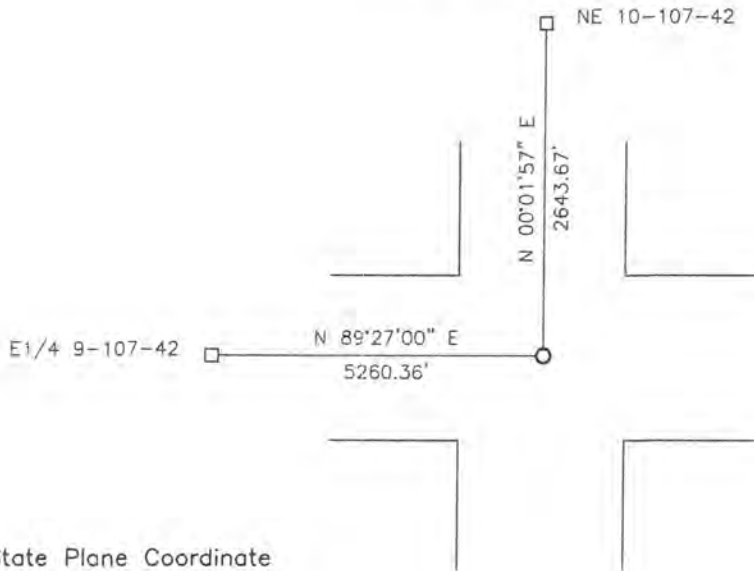
At the corner location shown on the sketch:

On 09-17-2018 found a PK NAIL  
DATE

left monument as found,  lowered monument,  removed monument (explain)

On \_\_\_\_\_ placed a \_\_\_\_\_  
DATE

### SKETCH OF REFERENCE TIES



Minnesota State Plane Coordinate  
System Murray County Datum  
NAD83 (1996)

N: 187420.152  
E: 474506.241

Statement of evidence relative to this corner location is on back of page.

I hereby certify that this document and the data contained herein was prepared by me or under my direct supervision.

[Signature] 9/20/18  
name DATE  
License No. 43844

STATE OF MINNESOTA, }  
COUNTY OF MURRAY, } SS.

I hereby certify that the within instrument was filed in this office for record on the 5TH day of FEBRUARY A.D. 20 19 at 9:00 o'clock A. M, and was duly recorded as Document No. \_\_\_\_\_

[Signature]  
County Recorder

## Statement of Evidence

E1/4 10-107-42

In 1861, L. G. M. Fletcher did the original subdivision of the township.

(No Date) The Murray County Highway Department set a concrete monument at the corner.

On April 20, 1989, The Murray County Highway Department found a field stone at the corner. They set a 1" iron over the stone.

On August 19, 2013, The Murray County Highway Department set a PK nail at the road surface after overlay.

On September 17, 2018, Bueltel-Moseng Land Surveying found a PK nail at the corner.